

Chemistry - maXis HPLC-ESI Accurate Mass Report

Analysis Info

Analysis Name D:\Data\Chemistry\2014\Oct 14\Gelator 22_GB5_01_14975.d
Method soton lcms pos 120 to 1500.m
Sample Name Gelator 22
Comment Analyst: JMH

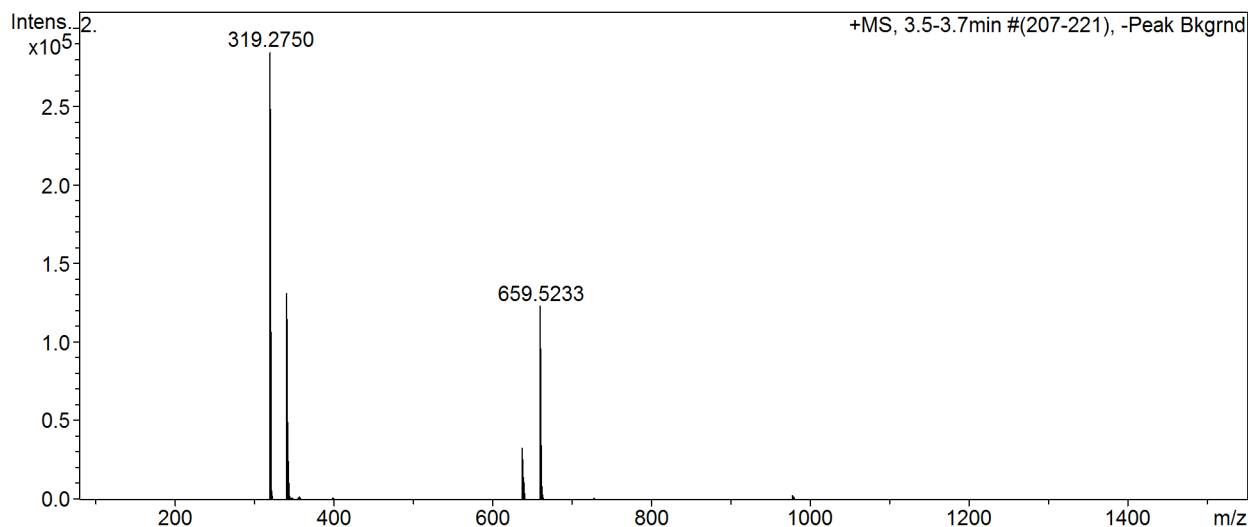
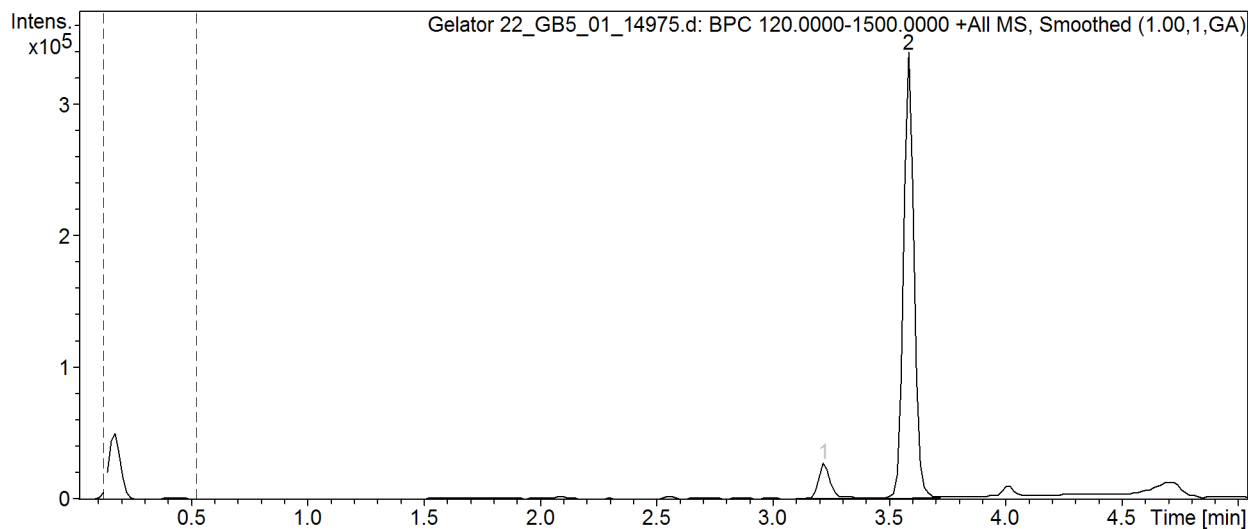
Acquisition Date 23/10/2014 13:38:20

Operator MSWEB@SOTON.AC.UK
Instrument / Ser# maXis 17

Acquisition Parameter

Source Type	ESI	Ion Polarity	Positive	Set Nebulizer	2.0 Bar
Focus	Not active	Set Capillary	4000 V	Set Dry Heater	200 °C
Scan Begin	120 m/z	Set End Plate Offset	-500 V	Set Dry Gas	8.0 l/min
Scan End	1500 m/z	Set Collision Cell RF	300.0 Vpp	Set Divert Valve	Waste

Cmpd 2, 3.6 min



Chemistry - maXis HPLC-ESI Accurate Mass Report

Meas. m/z	Formula	m/z	err [ppm]	err [mDa]	# Sigma	mSigma	rdb	e ⁻ Conf	N-Rule
319.2750	C 20 H 35 N 2 O	319.2744	-1.9	-0.6	1	3.3	4.5	even	ok

Samples were analysed using a MaXis (Bruker Daltonics, Bremen, Germany) mass spectrometer equipped with a Time of Flight (TOF) analyser. Samples were introduced to the mass spectrometer via a Dionex Ultimate 3000 autosampler and uHPLC pump. Gradient 2% methanol (0.1% formic acid) to 100% methanol (0.1% formic acid) in seven minutes. Column, Kinetex C18 (Phenomenex) 1.7 micron 50 x 2.1mm. High resolution mass spectra were recorded using positive/negative ion electrospray ionisation.